



Třinec

Sustainable mobility



Třinec

37 000 inhabitants

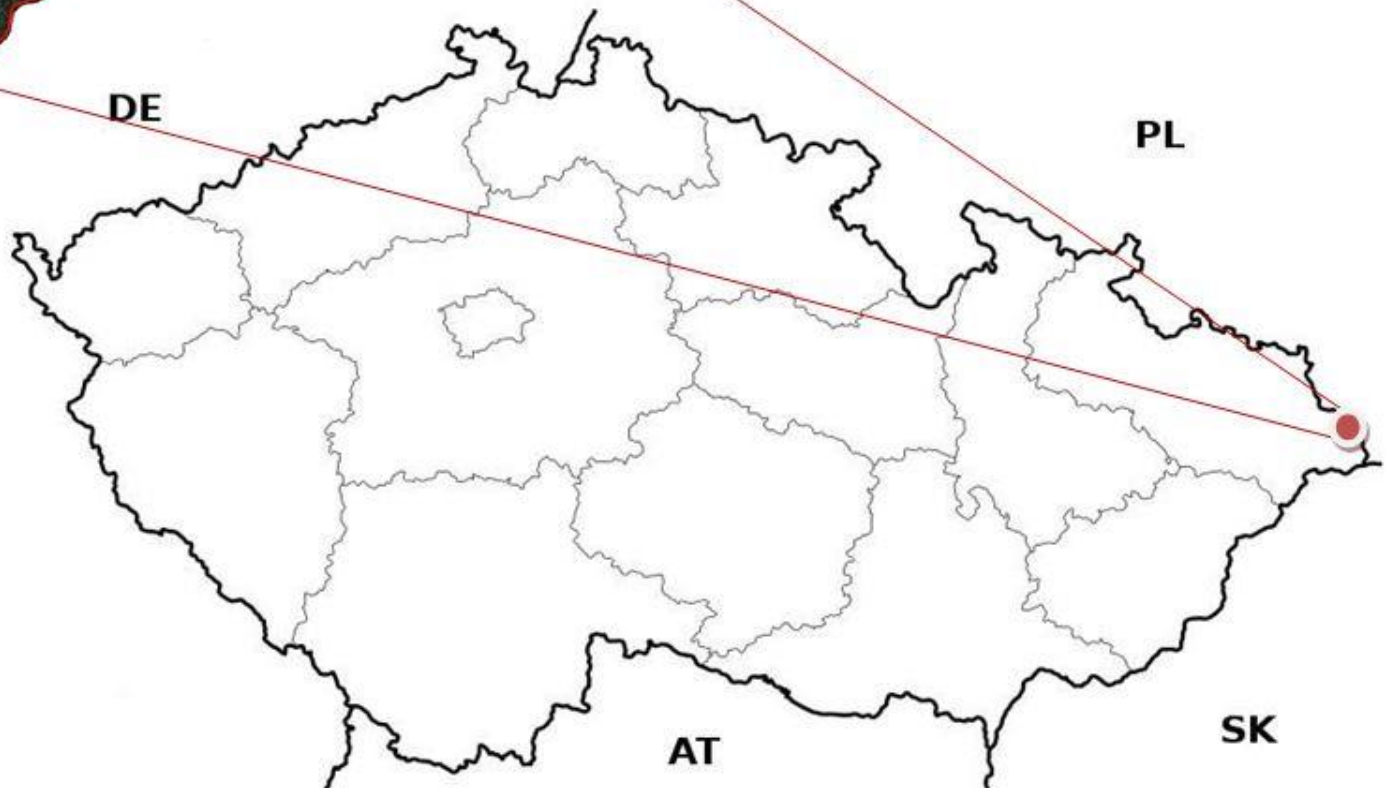
95,6 km²

river Olše

mountains Beskydy

international railway Bohumín – Žilina

international roadway E75





Třinec Iron and Steel Works are situated near the heart of the city and employs 10 000 people.

The way to sustainable urban mobility



Třinec signed the Uherskohradišťská charter in June 2012. It was a charter of some towns in the Czech Republic which want to support cycling as equal means of transport.



Asociace
měst pro
cyklisty

As follows Třinec came into Association of cycling cities in 02. 07. 2013, where was one of the first members. Their mainly effort was improved conditions and legislations for cycling transport and sustainable urban development.



THE CIVITAS INITIATIVE
IS CO-FINANCED BY THE
EUROPEAN UNION

CIVINET as a group of city networks strive for sustainable urban mobility and share experience between European cities. Třinec became as a member of this net in the 2015 to approach to other european countries.

CIVINET



TŘI KROKY NAPŘED

KONCEPT CHYTRÉHO MĚSTA

The first strategic document in Třinec, which dealt with sustainable mobility, was the "Třinec i ty" project, which was adopted in 2016. It is not a typical way of Czech cities.

Just by the way, this is not a common concept like a SUMP. It's the concept of a smart city.



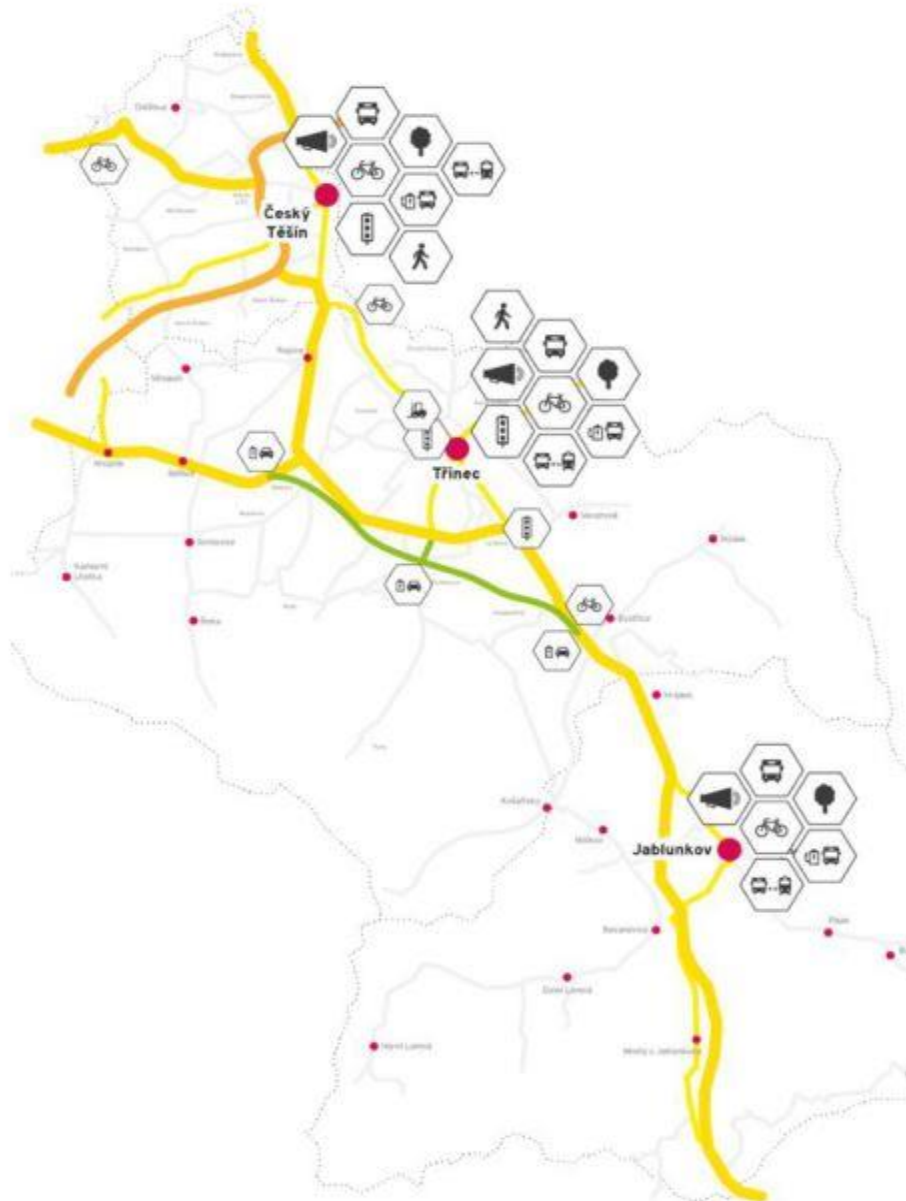
Smart city conception



Parts of conception:

- Smart government
- Smart environment
- Smart mobility
- Smart technologies





The "Třinec i ty" concept has become the main brand of all measures in the field of sustainable mobility, urban planning and environmental protection.

This approach is applied across the region. Třinec enters into new partnerships and cooperation with other cities, or with the University of Ostrava, the Road and Motorway Directorate, and so on.

New measurements

Electric buses in public transport

10 buses Škoda Perun

They ride out for the first time in 10th march 2017,

It is high reliability bus, comfortable and users friendly.



New measurments

New railway station in city cent

Very popular
measurment of
intermodality

P+R car park

B+R bike park

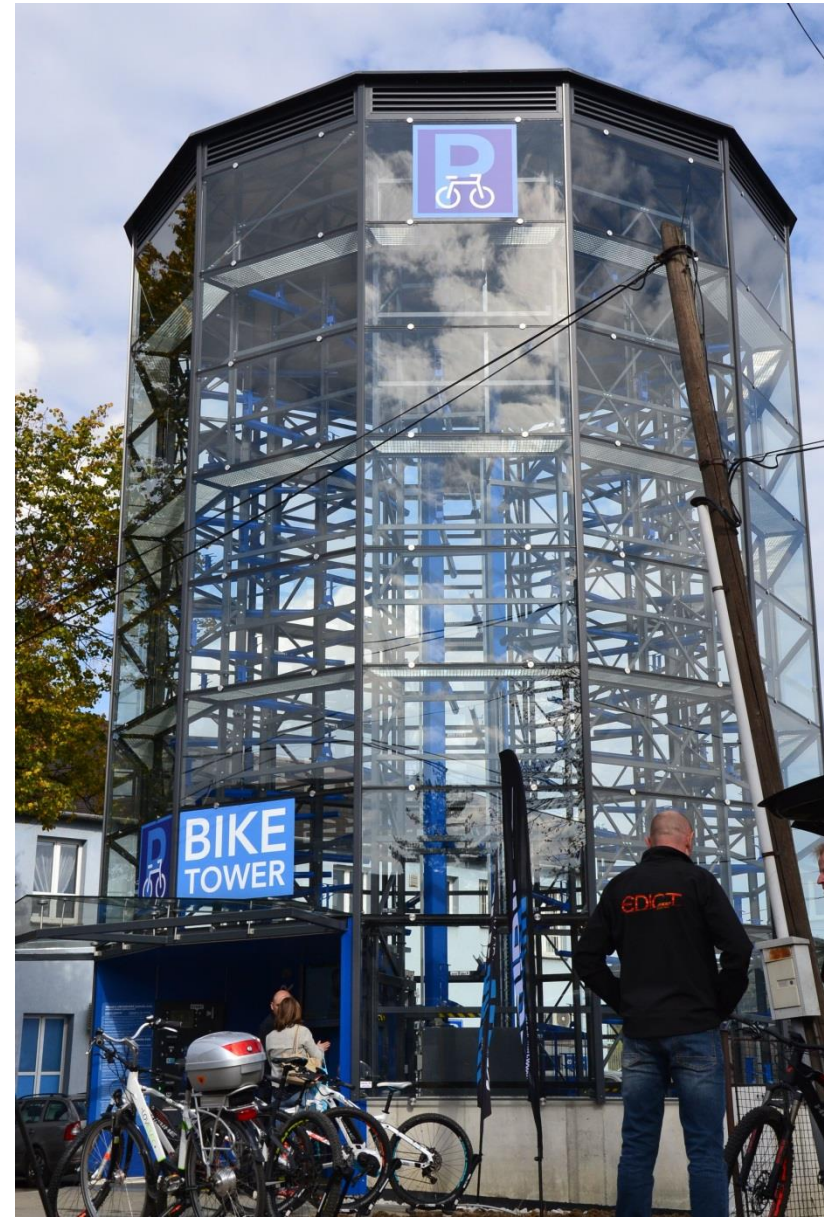


Parking bike tower

Was built in 2017 near the new railway station

information campaign about the upcoming construction was started before the actual implementation

www.biketower.cz



New measurements Biketower campaign





NÁVOD K POUŽITÍ

JAK USCHOVAT SVÉ KOLO?

- Vstupte do žluté bezpečnostní zóny a vjeďte předním i zadním kolem do parkovacího žlobíku.
- Najeďte předním kolem na vzdálenost cca 5 cm před vstupní dveře. V nich se otevře parkovací otvor.
- ZATLAČTE přední kolo do parkovacího otvoru tak, aby došlo k uchopení kola.
- Správnost uchopení potvrdí zelený řádek na monitoru.
- UŠTĚPTE za žluté bezpečnostní zóny a stiskněte na displejním terminálu tlačítko START.
- Vyčkejte na hluk zachovného listku, ten osděláte a pečlivě uchovávejte.

JAK VYZVEDNOUT SVÉ KOLO?

- Přistupte k platběm terminálu a pečlivě uchovávejte listek přiložením ke ztečce.
- Zaplaťte částku zobrazenou na monitoru podle svého termínu libovolnou měnou v hodnotě 1, 2, 5, 10, 20 nebo 50Kč.
- Pokud požadujete doklad o zaplacení, zaplaťte žadatel tlačítkem ANO.
- Po zaplacení nevstupujte do žluté bezpečnostní zóny a vyčkejte příjezdu vašeho kola!
- Po výjezdu kola a uzavření vstupních dveří kolo uvolníte vstupem do žluté bezpečnostní zóny.
- Osděláte kolo a opusťte vstupní modul.

DO BUDOUCNOSTI

- 🔦 CYKLOVĚŽ MŮŽE SLOUŽIT JAKO NABÍJEČKA ELEKTROKOL
- 🔦 TAKÉ JAKO VEŘEJNÁ PŮJČOVNA KOL A ELEKTROKOL
- 🔦 POKUD BY BYLA V JABLUNKOVÉ STEJNÁ VĚŽ, BYLO BY MOŽNÉ KOL PŮJČENÉ V TRINCI VRÁTIT AŽ TAM



ZJISTI VÍCE V TĚTO BROŽURĚ :)







New measurments European mobility week

- Danish exhibition
- Workshops with students
- Public lecture for seniors
- Competitions with mobility topic
- Beautification public spaces
- Exhibition of hybrid and electric vehicles on square
- New rechargeable stations for electric cars
- Sensational map on square
- Concerts on square
- Projection of film with sustainable mobility theme



Reconstruction roadway - Nádražní street

Implamantation 2018-219

Complete reconstruction of the main road, with emphasis on the safety of cyclists and pedestrians (such as paving, bicycle lines, bicycle paths, bus stops etc.)

Close cooperation with the road owner (district government) and Třinecké železářny.

More funds



New measurments

Bike season 2019

Rechargeable station for e-bikes,

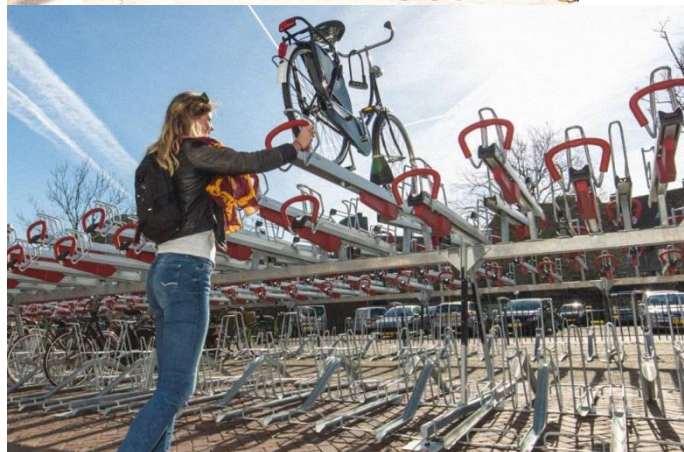
Service stands with bicycle pumps www.bimission.eu,

Multi-storey parking places for bikes,

Smart cycling stands (inovation) www.keylog.net,

Lecture for seniors www.seniorbeznehod.cz,

Beautification pedestrian underpass by local artist, etc



Design of street – public space

petit atelier

architektura
projekce
design

náměstí Svobody Třinec

studie podzemního
parkování pro 390 vozidel

Jan Beneš, Jan Šimka, Radim Jevický

Project to relocate parking from public space to underground parking. However, this option is very expensive.

Thank you for attention and see you in Třinec



Leszek Gryga, department of transport

00420774749885,

Leszek.gryga@trinecko.cz, www.trinecko.cz

