

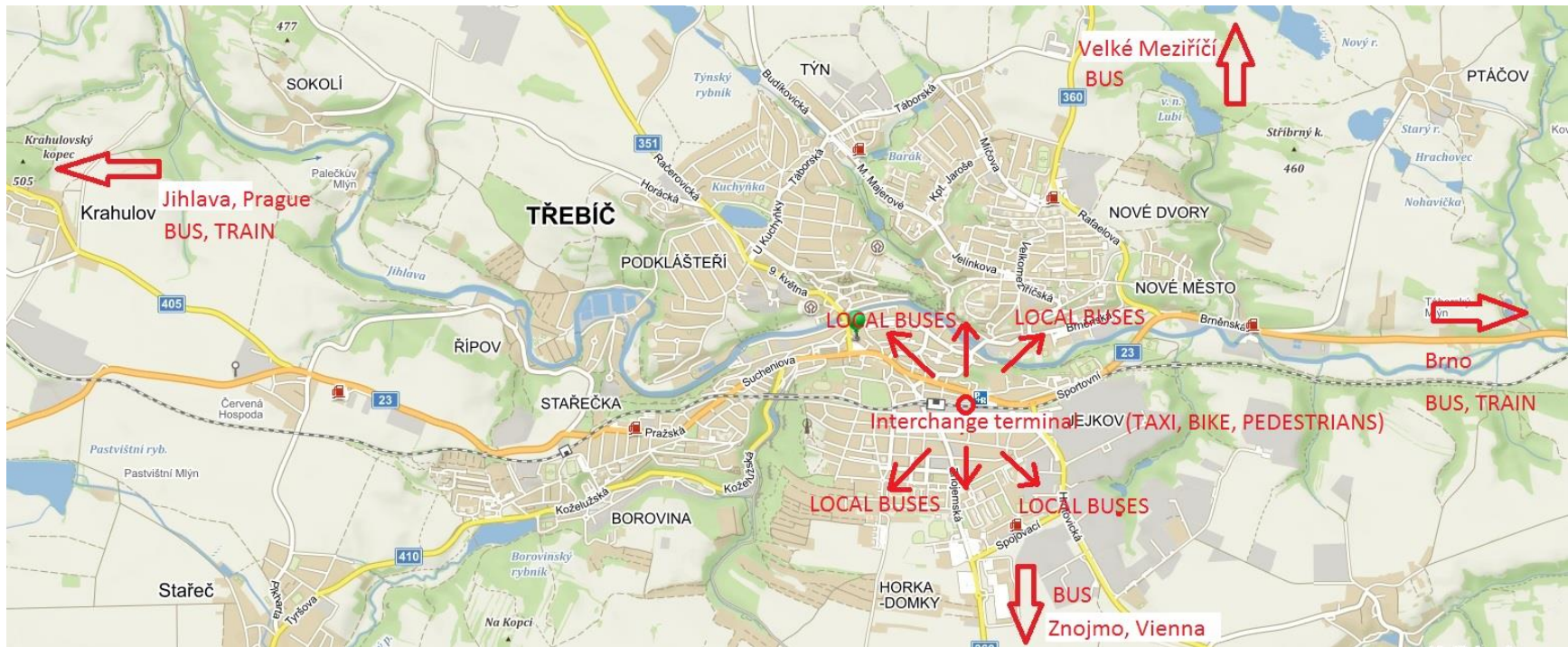
••• Třebíč



Smart urban mobility in Třebíč
Aleš Kratina, 2019



Transport relationships near Třebíč



Individual transport system

- only one main road with east-west with various radial roads (photo above)
- continual growing amount of car
- progresive rate on public carpark (parking policy)
- residential parking zones



Main railway station in Třebíč with multimodal transport terminal

Opened 1.5. 2015

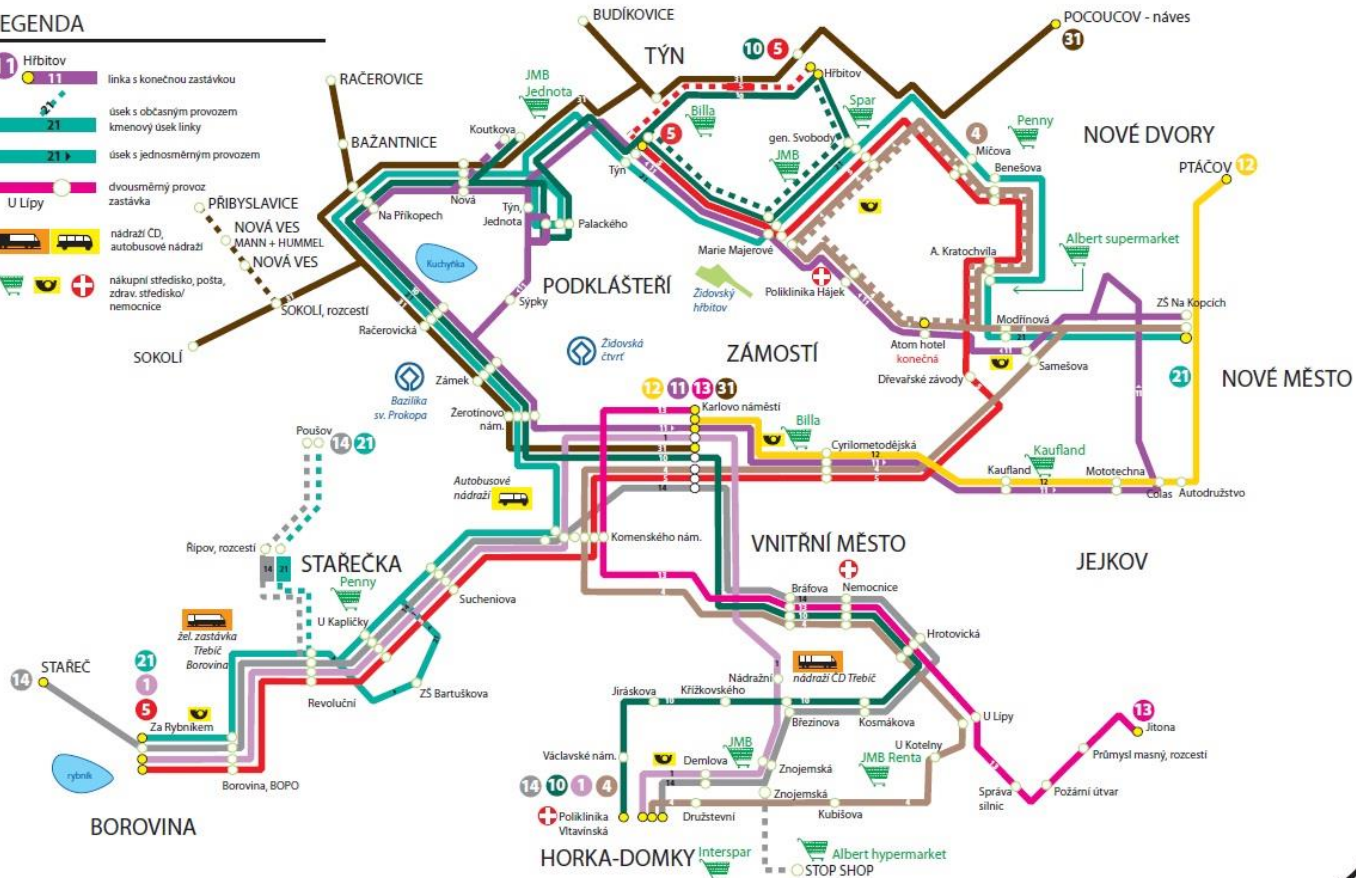


Maps of public transport system (10 lines)

SCHÉMA MĚSTSKÉ AUTOBUSOVÉ DOPRAVY V TŘEBÍČI

LEGENDA

- 11** Hřbitov
linka s konečnou zastávkou
- 21**
úsek s obousměrným provozem
kmenový úsek linky
- 21**
úsek s jednosměrným provozem
- U Lipy**
dvousměrný provoz
zastávka
- nádraží CD, autobusové nádraží
- nákupní středisko, pošta, zdravotní středisko/nemocnice



Public transport system

- One way ticket – 12,- Kč (0,5 Euro)
- Operating daily from 4:30 – 23:00
- Central junction on main square
- 910 000 km per year
- Municipality compensation 6,- Kč (0,25 Euro) to each ticket (1,5 million Euros)



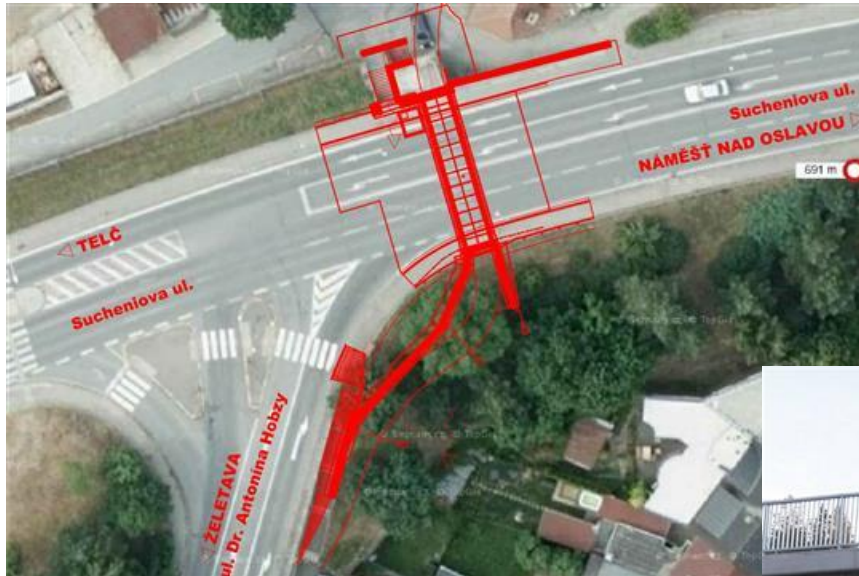
Mercedes-Benz Conecto near main railway station

Our new projects



Bike line, Modřínová street

Our new projects



Bike trail no. 26, Bike underpass

Our new projects



Bike box on terminal

Our new projects



Spinwire parking system

Our vision

- SUMP (2019 - 2020).
- Public e-bike sharing system (2020).
- Smart „Spin wire“ detect system on 3 biggest parks (2019).
- To built main road by-pass (2025).
- To established electric train system between Brno and Trebic.
- Sustainable transport education for secondary schools.

Thanks for your attention

Aleš Kratina

E-mail: a.kratina@trebic.cz

Cell phone: +420725948844