

PROGRAM

 **TWITTER: @WINSPIRE3**

D
A
Y
1

9:00 – 9:20	Introduction (Petr Pokorny, NTNU)
9:20 – 9:40	Green Trondheim (vision, strategy, projects) (Richard Sanders, Miljøpakken)
9:40 – 10:30	Presentations from Czech cities & Association of Cycling Cities
<i>10:30 – 10:40</i>	<i>Coffee break</i>
10:40 – 10:50	Urban mobility research at NTNU
10:50 – 11:10	Urban mobility research at CVUT
11:10 – 11:30	Urban mobility research at UJEP
11:30 – 11:50	Urban mobility research at TØI
<i>12:00 – 13:00</i>	<i>Lunch</i>
13:00 – 16:00	Excursion
<i>18:00 – 22:00</i>	<i>Social evening</i>

2

9:00 – 9:15	Summary of day 1, organisation of day 2 (Petr Pokorny, NTNU)
9:15 – 9:30	Overview of Czech-Norway grant possibilities (Andrea Nilsen, NTNU)
9:30 – 10:10	Group work
<i>10:10 – 10:30</i>	<i>Coffee break</i>
10:30 – 11:00	Summary of the group work and the whole workshop (Petr Pokorny, NTNU)

WINSPIRE

Czech – Norwegian workshop on sustainable urban mobility



CTU

CZECH TECHNICAL
UNIVERSITY
IN PRAGUE

UNIVERZITA J. E. PURKYNE V USTI NAD LABEM



Asociace
cykloměst

tøi



NTNU

- The call was opened 31.8.2018 by Czech Ministry of finance
- The whole budget: 250 000,- EUR
- 17 from 32 proposals were approved
- WINSPIRE is the only one with a transport theme

<https://www.eegrants.cz/cs/vyzvy/2018/ukonceni-1-otevrene-vyzvy-fondu-pro-bila-2592>

Ministry of Finance of the Czech Republic

EEA and Norway Grants

Iceland Liechtenstein Norway grants

RSS NEWS SITEMAP TEXT VERSION CĚSKY ENGLISH

 SEARCH

► CHOOSE AN AREA:

RESEARCH	EDUCATION	CULTURE	HEALTH	GOOD GOVERNANCE	ACTIVE CITIZENS
SOCIAL DIALOGUE	ENVIRONMENT	HUMAN RIGHTS	JUSTICE	HOME AFFAIRS	BILATERAL RELATIONS

Home

- News
- General Information
- Calls
- Questions and Answers
- Closed programming period
- Complaints
- Contacts
- Bilateral Relations

NEWS



- 22 FEB 2019 State Environmental Fund of the Czech Republic is preparing a contact seminar for the Programme Environment
- 8 FEB 2019 Match-making of the Health Programme
- 29 JAN 2019 Promotion of Programme Culture in Norway

EEA AND NORWAY GRANTS

The EEA and Norway Grants represent the contribution of Iceland, Liechtenstein and Norway to reducing economic and social disparities and to strengthening bilateral relations with 15 EU countries in Central and Southern Europe and the Baltics.

The Czech Republic has been a recipient of this financial support since 2004 when we joined the European Union and therefore the European Economic Area (EEA) as well.

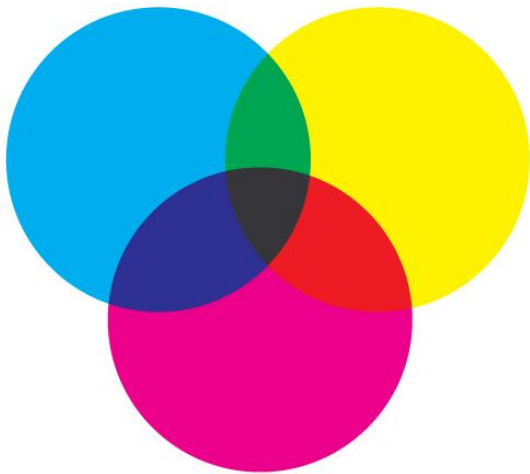
FOR APPLICANTS



AIMS

discussing and identifying the overlaps/fitting pieces in participants' interests, expertise and skills in the field of sustainable urban mobility

in order **to initiate a potential cooperation**





AIMS - SURVEY

- **To learn and inspire from others**
- **Networking**
- **Future collaboration**
- **Specifying and designing a project proposal**

- **How to make the expert knowledge available to the public in a comprehensible form**
- **How to introduce participation into the agenda of municipality**
- **How to become a good example for local community**
- **How to deal with parking policy**
- **How to changes of traffic behavior of the population**
- **How to integrate the sustainable plans at municipal level**

- **E-mobility in Norway**
- **Handling the rain water**

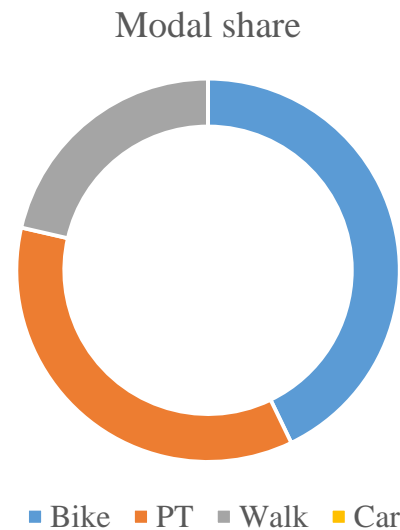
SURVEY – 12 respondents

8 researchers; 7 from a city with population over 100 000

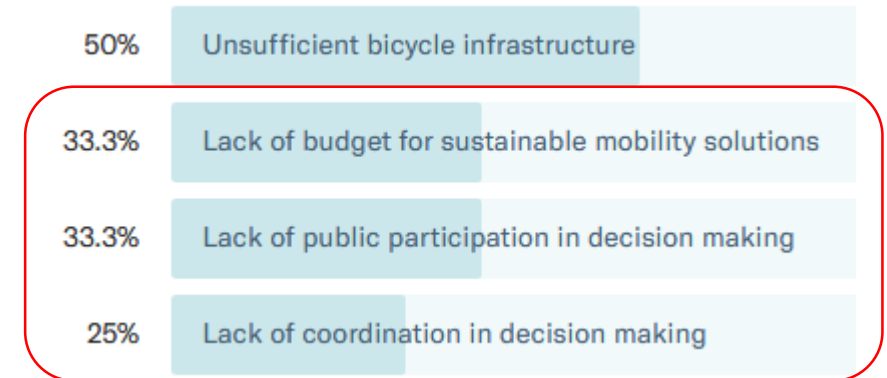
Experience

- Behaviour, Psychology
- Safety
- Urban freight
- Cycling, Walking, PT
- Urban development (city-neighborhood scale)
- Strategical planning
- Infrastructure design
- Evaluation of measures and policies
- Governance
- Public participation
- E-bike sharing

Travelling to work



Most urgent mobility issues



Freiwaldau
in der Zukunft

SUSTAINABLE URBAN MOBILITY

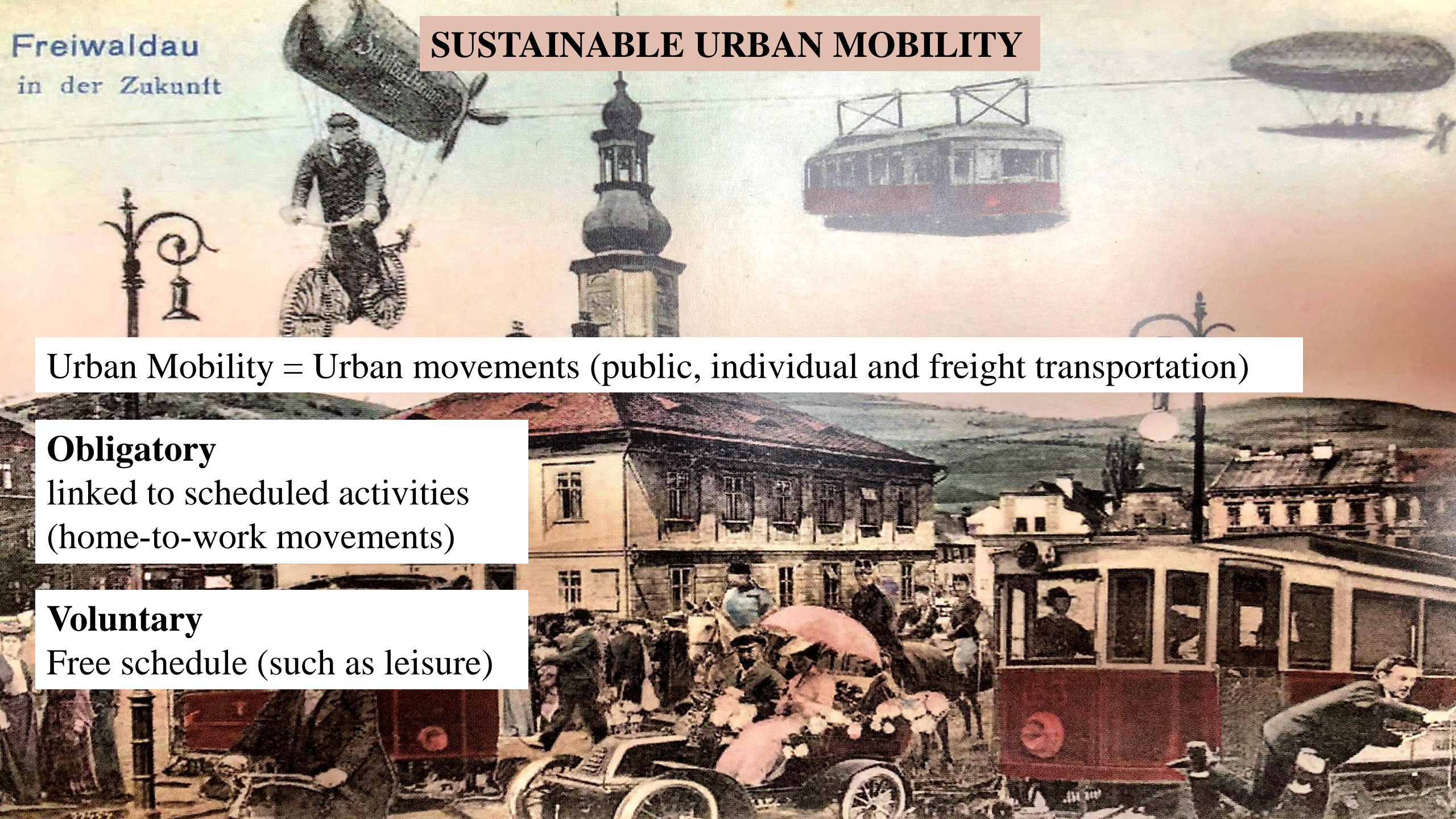
Urban Mobility = Urban movements (public, individual and freight transportation)

Obligatory

linked to scheduled activities
(home-to-work movements)

Voluntary

Free schedule (such as leisure)



SUSTAINABLE URBAN MOBILITY

Mobility is not a goal in itself (it is just a means to take part in relevant activities)

Sustainable = the least damageable to the environment and not impairing the mobility needs of future generations



Improving **accessibility**: Increase the number and diversity of activities within an acceptable travel time/costs, so the mobility can be done by walking/cycling/PT

Mobility is also a **social equity issue** - important variations in mobility according to age, income, gender, disabilities





Area: 385 000 km²

Population: 5 300 000 inhabitants

Population density: 14 persons per km² (lowest in Europe after Iceland)

Biggest cities (population)

- Oslo 720 000
- Bergen 290 000
- Trondheim 200 000
- Stavanger 140 000

82% percent of total population live in urban areas and cities

- Economy: Oil, Fish
- Energy: Hydroelectric plants
- Transport shaped by low population density, long coastal line
- 94 600 km of roads (664km motorways)
- 49 airports with scheduled flights
- World's largest registered stock of plug-in electric vehicles per capita (in 2017, 42% of new cars registered were electric)



Area: 78 900 km²

Population: 10 600 000 inhabitants

Population density: 134 persons per km²

Biggest cities (population)

- Praha 1 200 000
- Brno 380 000
- Ostrava 300 000
- Plzen 170 000

75% percent of total population live in urban areas and cities

- Highly diverse economy, export oriented (cars and other vehicles)
- Very low unemployment rate (2,4%)
- 55 000 km roads (1232 motorways)
- Densest rail network in the world (9505 km of rail lines)

Road safety (2017)



106 fatalities, 665 severely injured

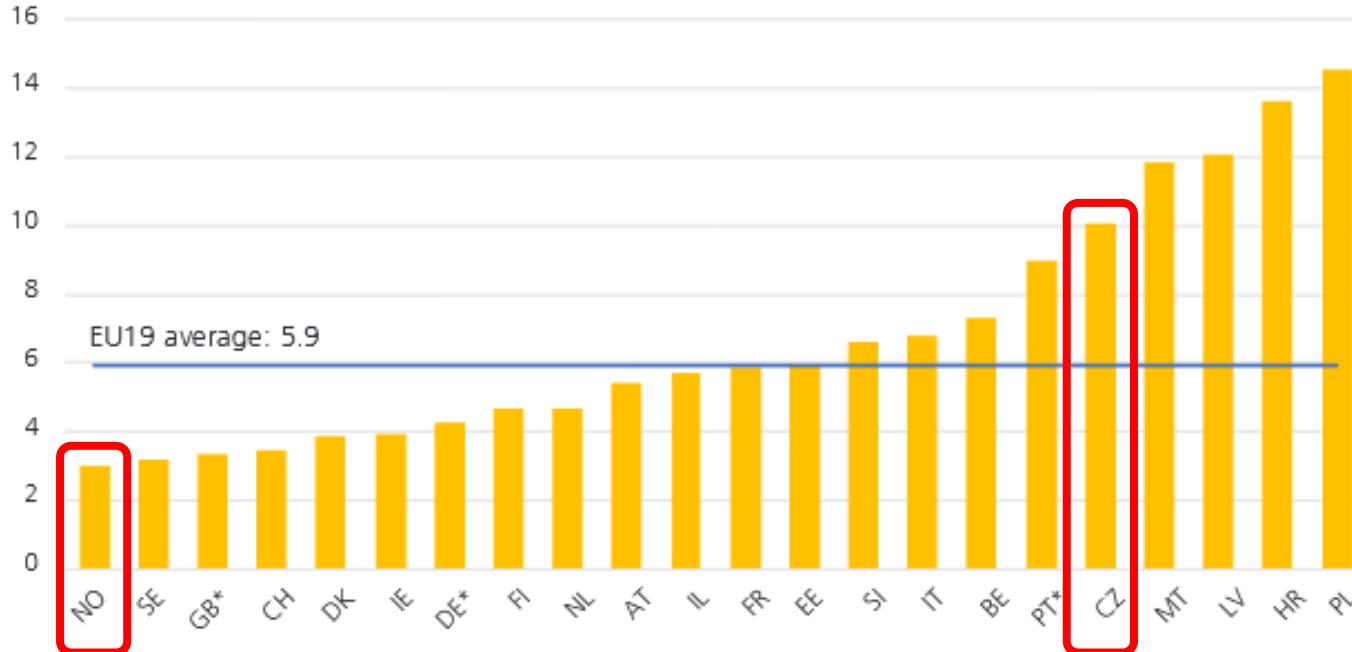
- **20 fatalities per 1 mil. inhabitants (lowest in Europe)**



502 fatalities, 2339 severely injured

- **54 fatalities per 1 mil inhabitants**

Road fatalities per billion vehicle-km



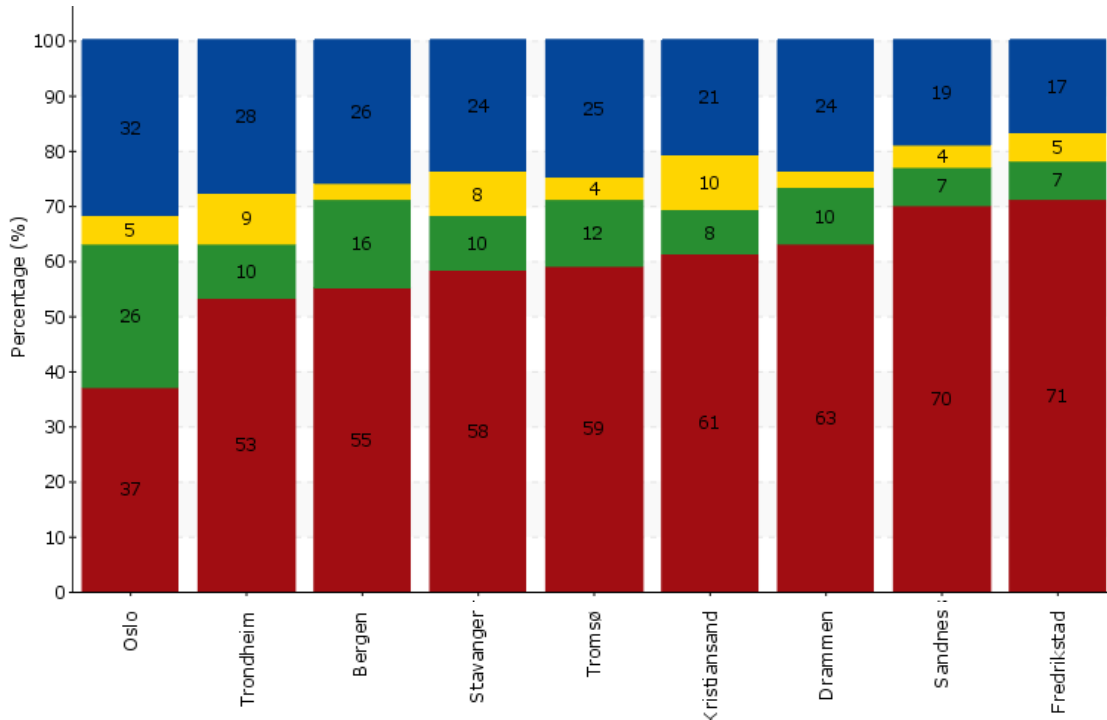
Reasons?

- traffic characteristics
- safety culture
- driving education
- penalties
- vision zero...

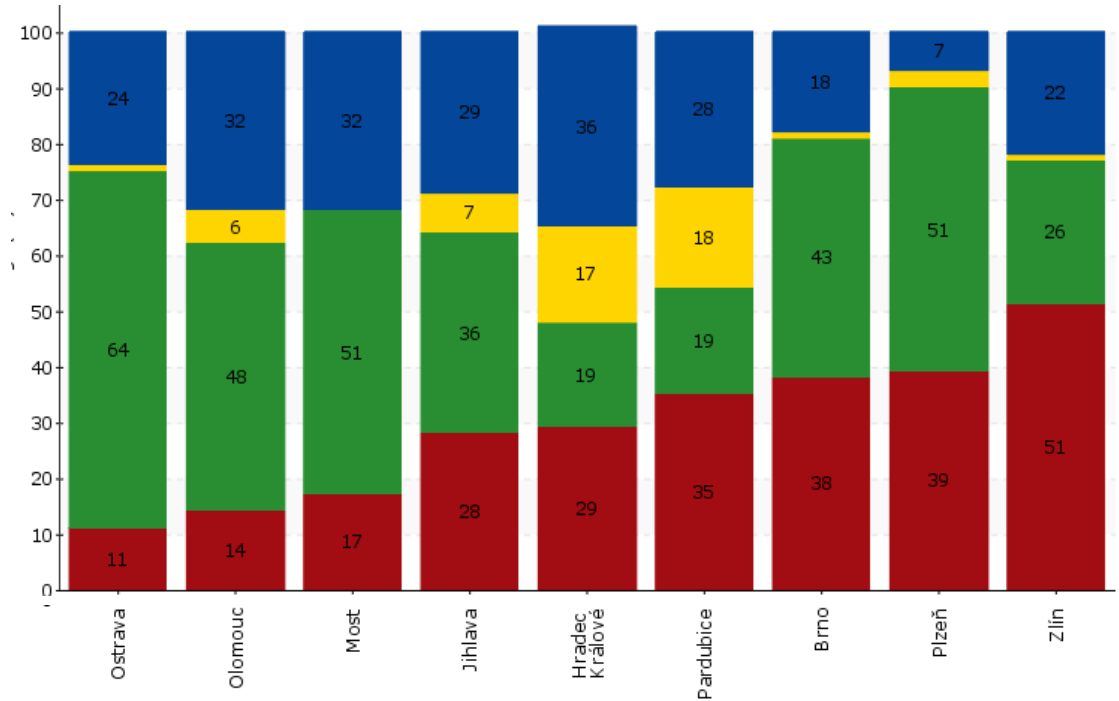
Modal share



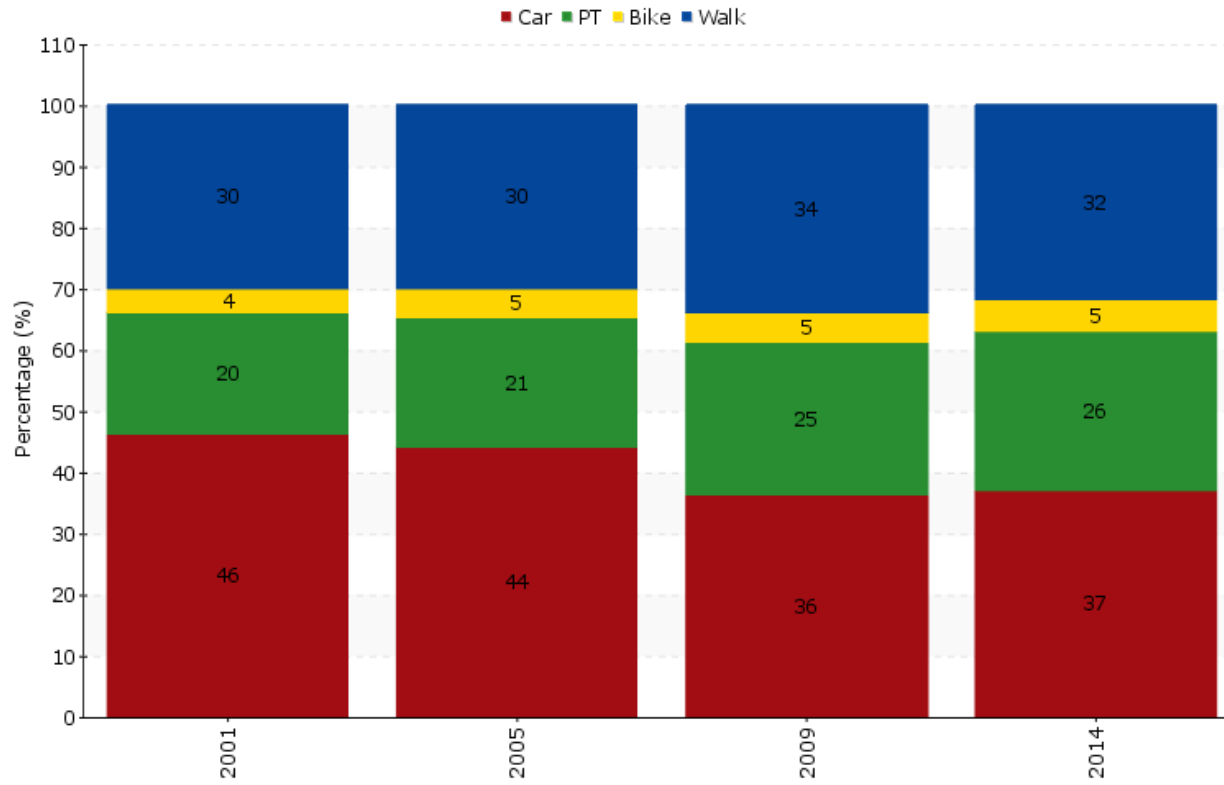
Cities over 50 000 inhabitants



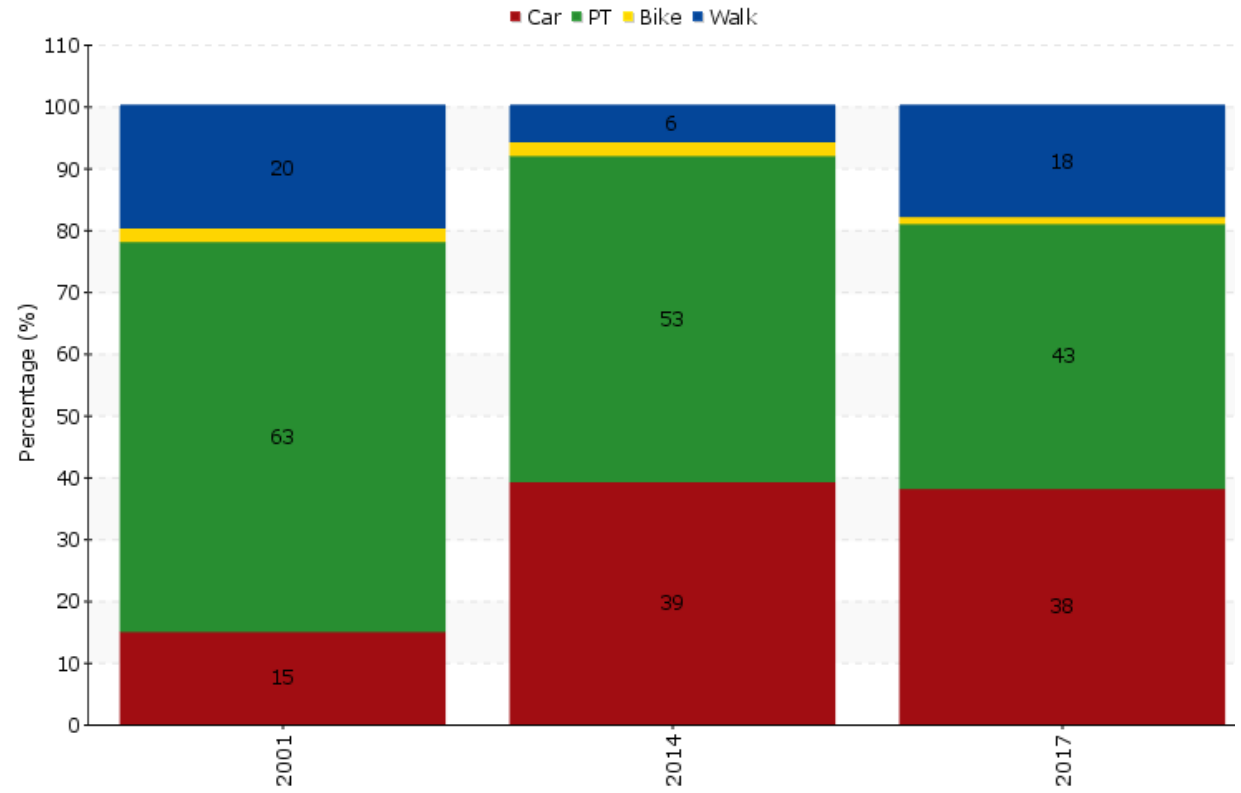
- Walk
- Bike
- PT
- Car



Oslo



Brno



National Transport Plans

Meld. St. 33 (2016–2017) Report to the Storting (white paper)

National Transport Plan 2018–2029

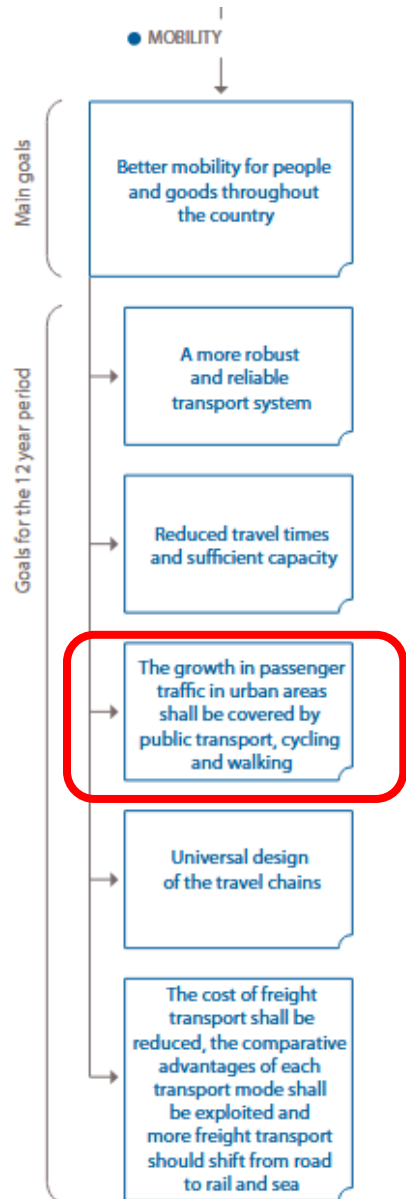


The Transport Policy of the Czech Republic for 2014–2020 with the Prospect of 2050





Overall objective: *“Transport system that is safe, enhances value creation and contributes to low-carbon society”*




“Central aspects: building and improving the railway network within and around the largest urban areas”

“A significant part of the transport growth can be covered bicycling and walking if suitable conditions are put in place”

“To target efforts to increase the numbers of pedestrians and cyclists”

“In some urban areas, the building of cycle superhighways may be introduced”

“Government intends to allocate 66.4 billion NOK to urban areas to measures for public transport, cycling and walking”



The main objective: *“to create conditions for the development of high-quality transport system based on the utilization of technical, economic and technological properties of individual transport modes, on the principles of competition, having regard to its economic and social impact and the impact on the environment and public health”*

“to improve sustainability and safety of urban mobility”

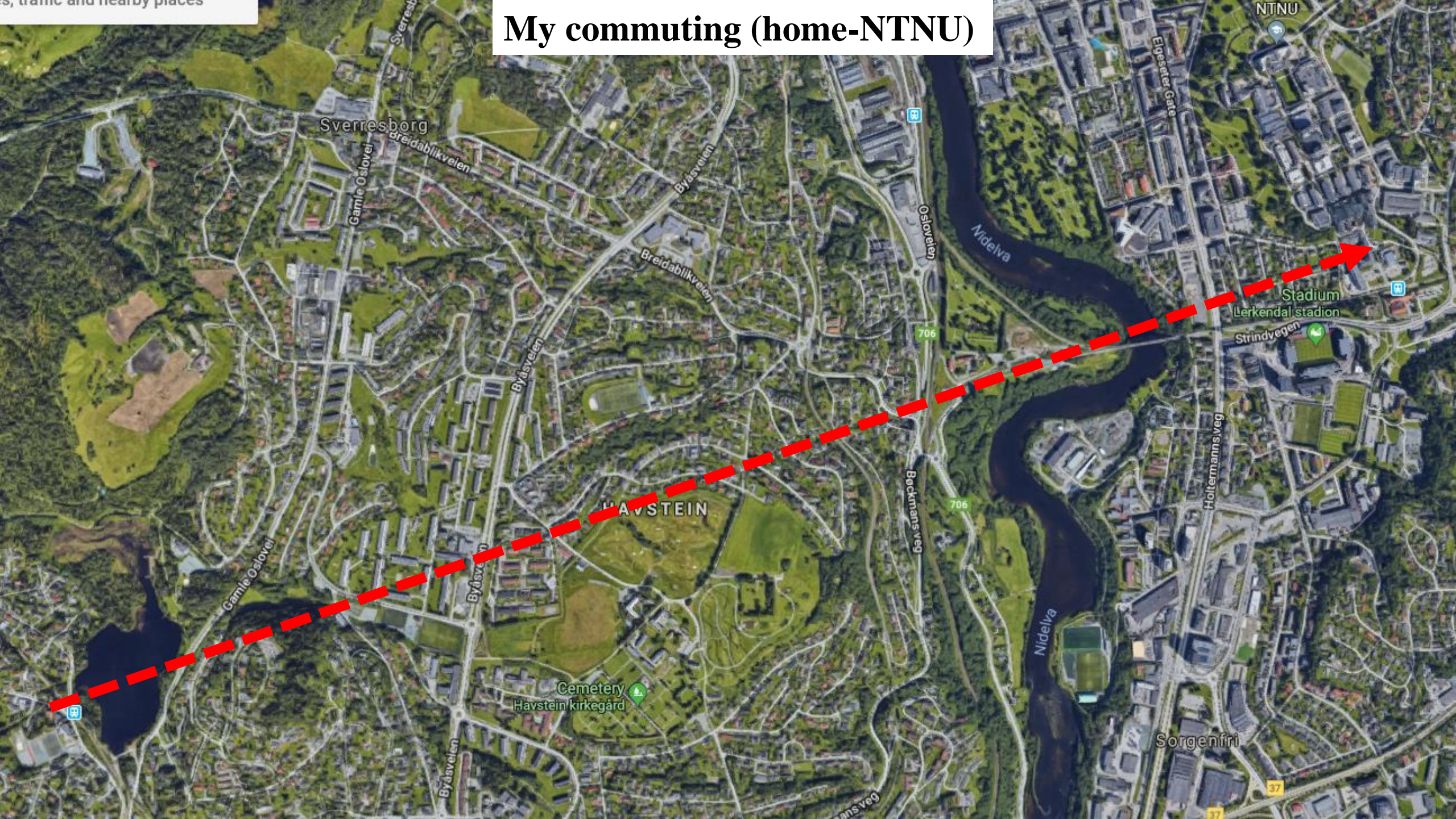
“channel freight transport by local road traffic measures”

“create a system for protection of city centers from non-essential car traffic, adapt city streets to the needs of pedestrians and city life, develop bike trails and pedestrian zones in cities...”

“develop the current network of non-motorized routes mainly for commuting between home and work or school”

“rethink the current use of sidewalks for cycling, allocating space for bike traffic according to local conditions also at the roadway level”

My commuting (home-NTNU)



Sverresborg

HAVSTEIN

Cemetery
Havstein kirkegård

Nidelva

Stadium
Lerkendal stadion

Strindvegen

Holtermanns veg

Sorgenfri

37

37

706

706

Osloveien

Beckmanns veg

Gamle Osloveien

Breidablikveien

Byåsvæien

Breidablikveien

Byåsvæien

Byåsvæien

Gamle Osloveien

Byåsvæien

NTNU

Egeater Gate

ans veg



- Toll (ca 30NOK one way)
- Parking fees (5NOK per hour)
- Petrol
- Safety risks

Telia N 16:50 84 %



MENY



PROFIL



INNSTALL...

Dine kjøretøy

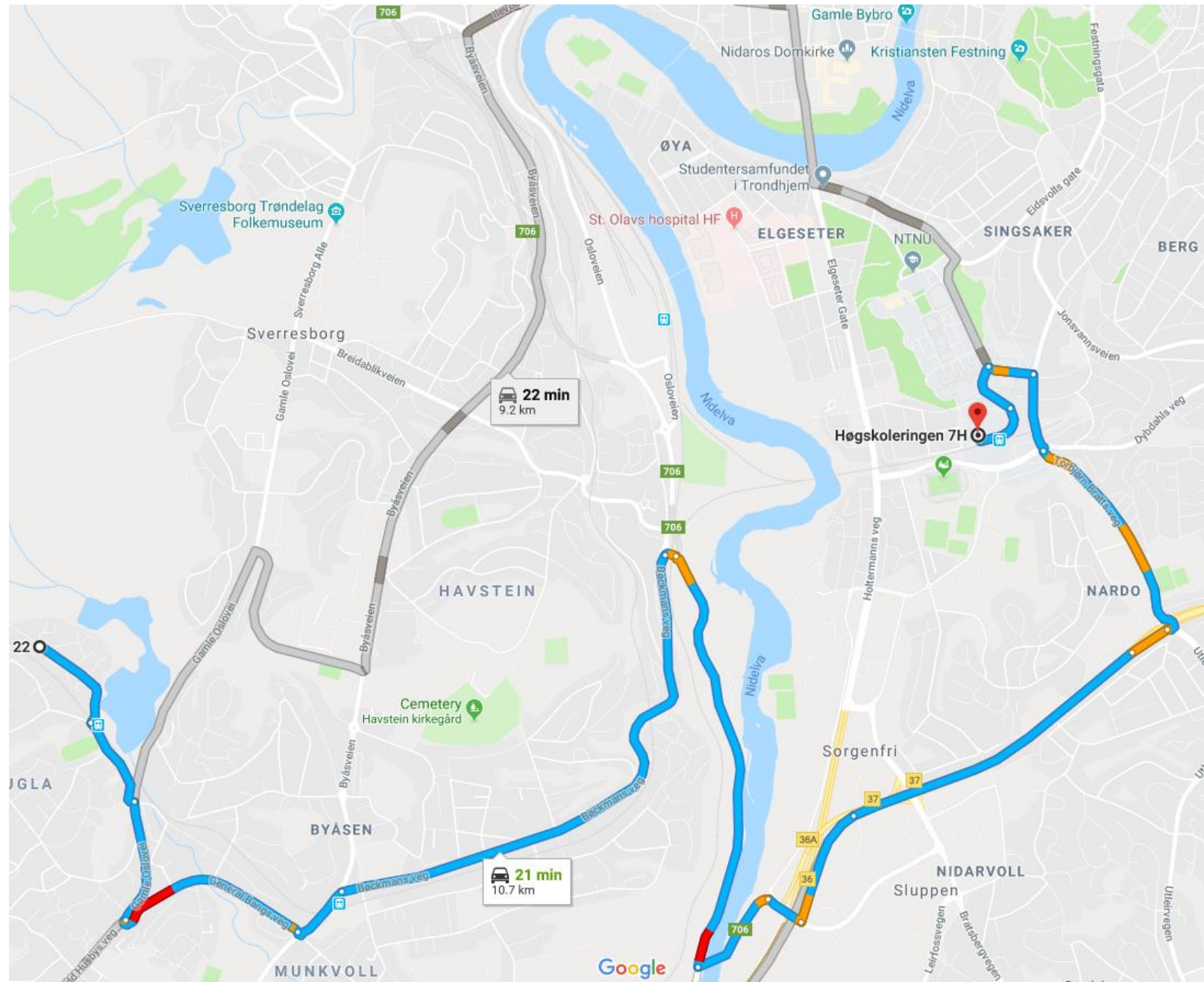
Registrer kjøretøy for å kunne starte parkeringer eller få parkeringer på områder med skiltgjenkjenning automatisk registrert og betalt med valgfritt betalingskort.

UF12780

Rediger >

VW golf

Autotrek skiltgjenkjenning inaktivt





- Ticket (38NOK one way, month card 760NOK)
- Time

Telia N 16:51 83%

Departures Map

Departures in real-time are yellow. Updated: 16:50

From: Kyvannet (Trondheim)
Stops: 2 Lines: All

1 St. Olavs gate	17:00
1 Lian	17:05
1 St. Olavs gate	17:15
1 Lian	17:18
1 St. Olavs gate	17:31

More departures

Travel

Depart from Arrive at

Stops Favorites Travel

Telia N 16:50 83%

Menu Buy single ticket

Travel with bus CHANGE

VALID IN Zone A CHANGE

ADULT kr 37,00

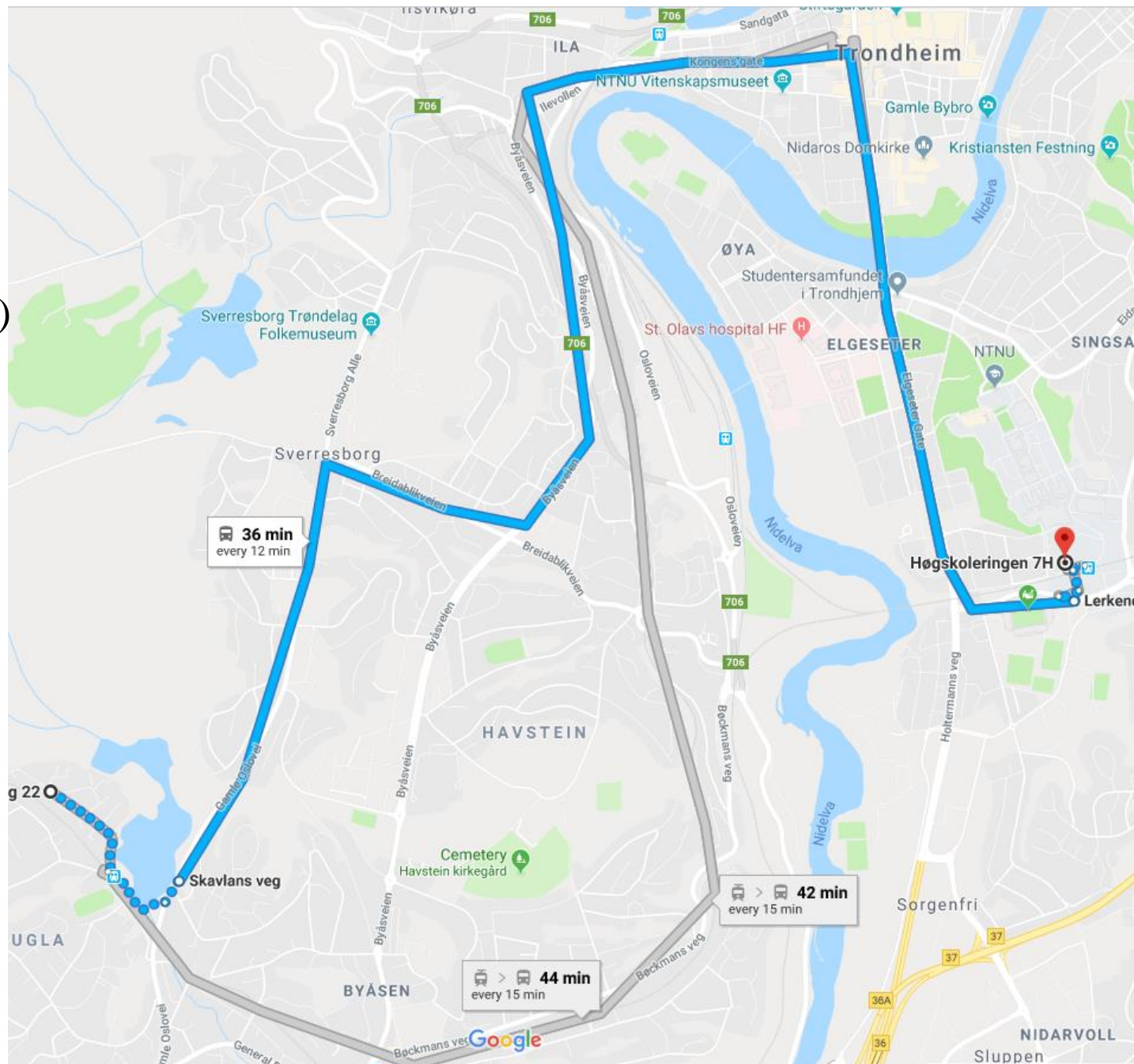
CHILD kr 19,00

BICYCLE kr 19,00

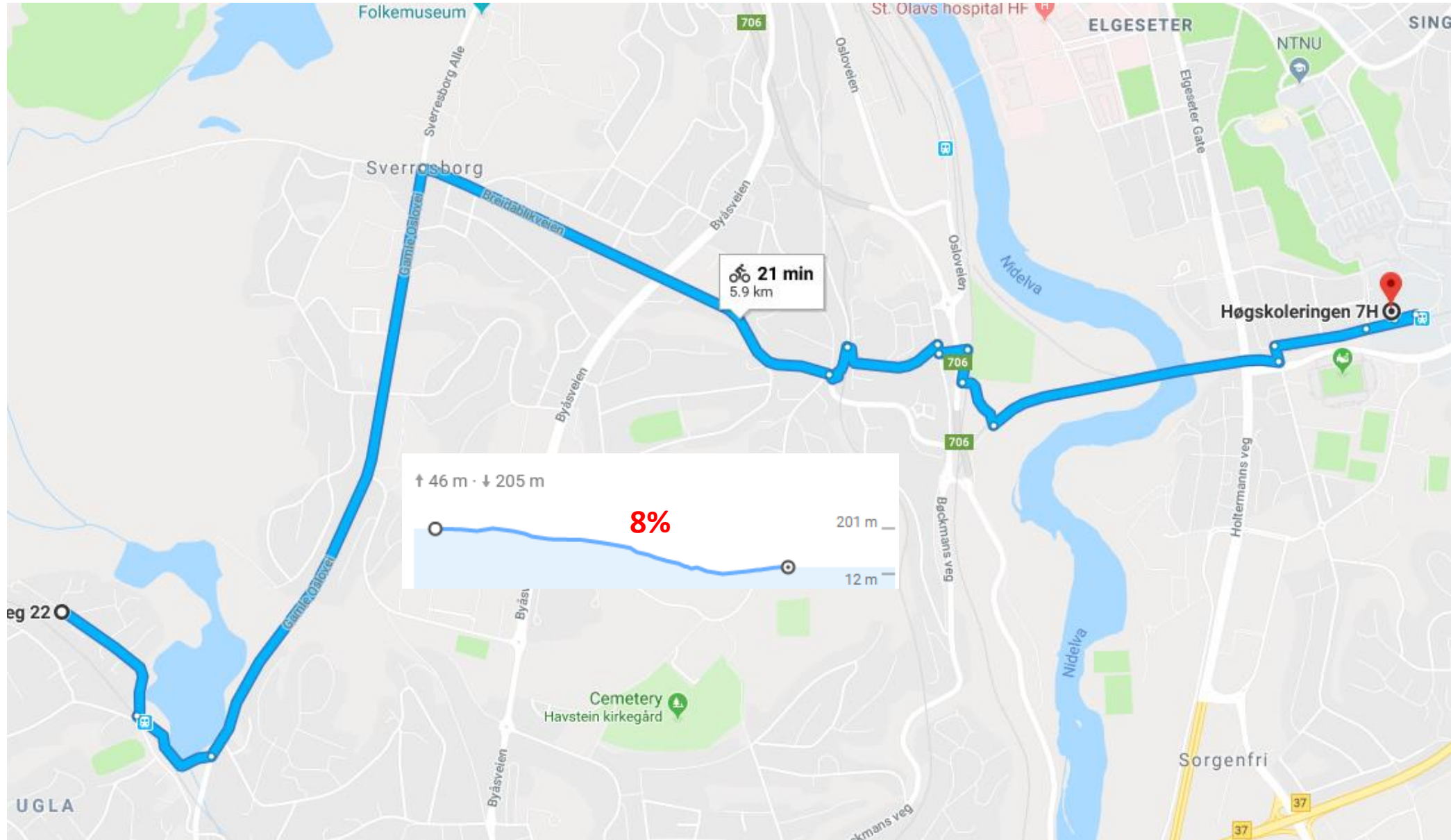
SENIOR

CHARGE CREDIT CARD

Buy ticket







tusen takk – thank you – děkuji



Norwegian University of
Science and Technology